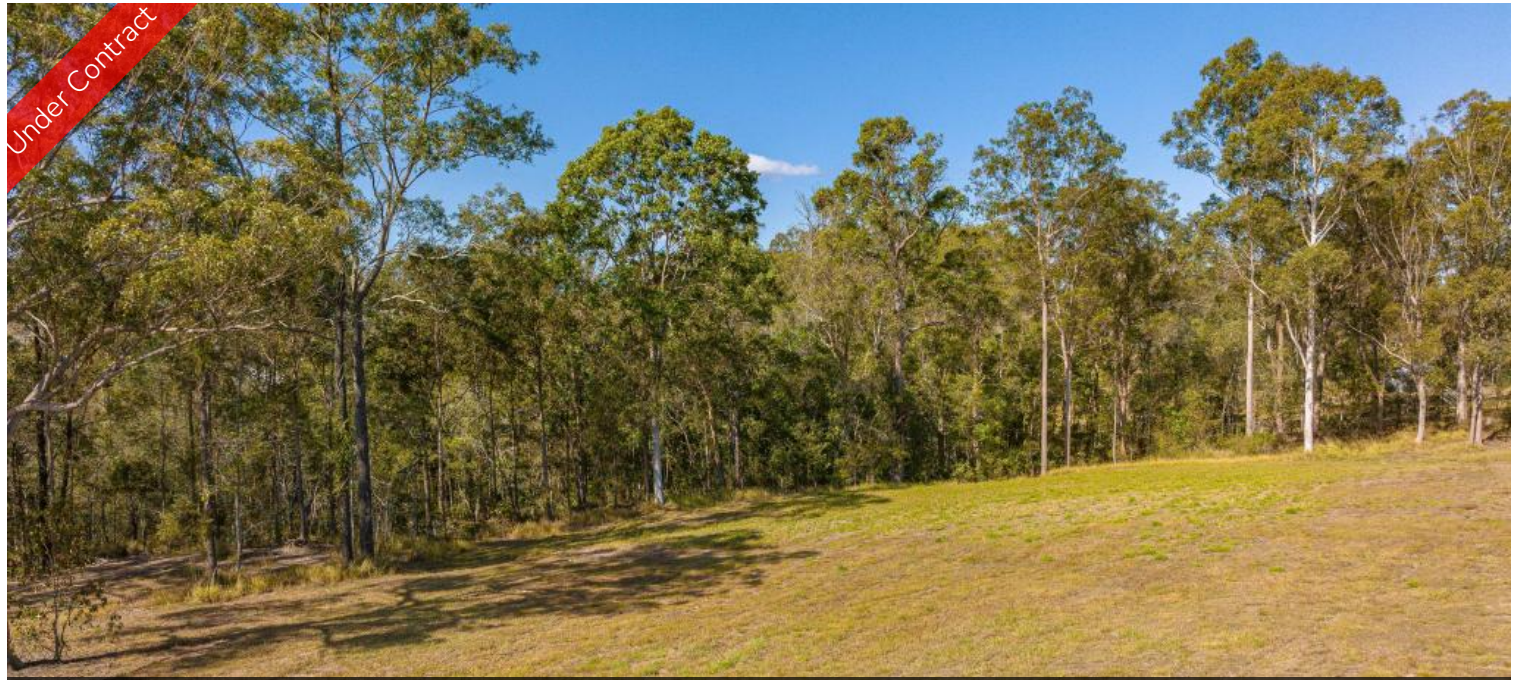


Under Contract



20 Sunny View Ct, Araluen



4,217M2 IN BOUTIQUE SUB-DIVISION

Title ready acreage land available now! Start your build on this mostly cleared block

4,217m2 of gently rolling land. Prime location in a boutique sub-division with bitumen road.

Although ONE Agency Gympie has provided all information related to this property to the best of our knowledge and resources, we shall not be held accountable or responsible for its accuracy. ONE Agency Gympie urge all buyers to conduct their own independent research and consult their own professionals to conduct due diligence before purchasing.

The above information provided has been furnished to us by the vendor/s. We have not verified whether or not that information is accurate and do not have any belief in one way or the other in its accuracy. We do not accept any responsibility to any person for its accuracy and do no more than pass it on. All interested parties should make and rely upon their own inquiries in order to determine whether or not this information is in fact accurate.

📏 4,217 m2

Price	\$311,500
Property Type	Residential
Property ID	793
Land Area	4,217 m2

AGENT DETAILS

Pete Angle - 0438 864 158
Keryn Angle - 0434 379 533

OFFICE DETAILS

One Agency Gympie
0438 864 158

ONE AGENCY
GYMPIE