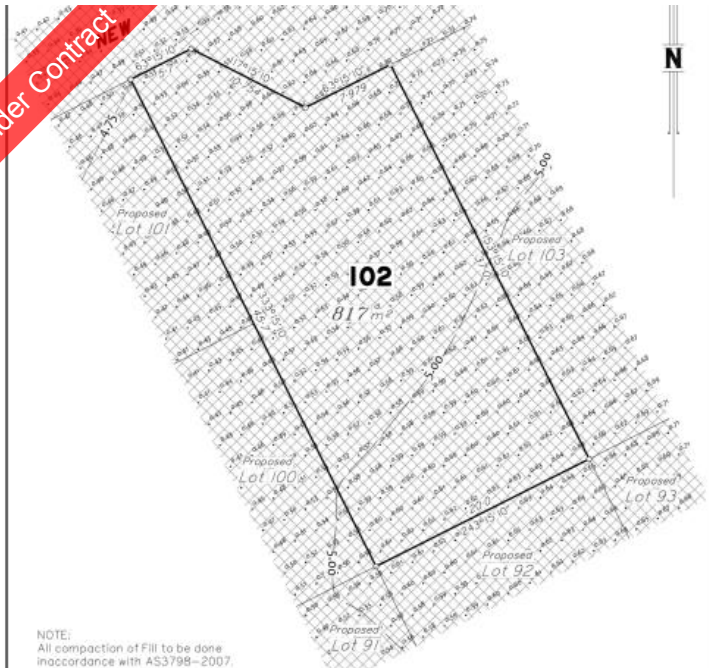


**Under Contract**



NOTE:  
All compaction of Fill to be done  
in accordance with AS3798-2007.

"This plan shows the general location of the  
proposed lot in relation to the other proposed  
lots in the Estate. Refer to the Disclosure Plan  
for identification and location of the proposed  
lot. The Seller reserves the right to alter the  
stage numbers and lot numbers as determined in the  
plan at it's absolute discretion."

## Lot 102 Gull Circuit, Woodgate

Scale 1:1500 - Lengths are in Metres.

LEGEND  
--- 22.0 --- Design Contours  
Design Depth of Fill  
Areas to be filled

NOTE:  
PLAN PREPARED BY  
SOUTH BURNETT SURVEYS PTY. LTD.  
This disclosure plan may contain information that is  
DISCLOSURE PLAN  
DESCRIPTION: PROPOSED LOT 102  
ONE AGENCY GYMPIE



## LOT 102 GULL CIRCUIT, WOODGATE

Woodgate is considered one of the Fraser Coast's most prized stretch, simply because it has it all. Set along 16km of white sandy beach that backs on to the Burrum Coast National Park and amid some of Queensland's finest fishing zones.

This is a land release that won't last long, due to its position between the Bruce Highway, Bundaberg, Hervey Bay and Fraser Island - a private slice of paradise where everything is within reach.

Drift Woodgate Beach is where private blocks are big enough to live the dream you've always wanted. And it's all within reach. Drift is all about space. You have space to breathe, space to build, space to create, space to park your boat, space to build your shed, space to take it all in.

Drift Woodgate Beach is a place to step off the treadmill and live! A paradise where life is as spectacular as it is simple.

Whether it's strolling along the shores with the kids or the dogs, Drift has been master-planned to be blend seamlessly with an existing beachside community where old time values are still appreciated, where people still say g'day, where life is uncomplicated and goes along at the pace you want.

At all times, Woodgate is a place reminiscent of a classic beach holiday, where you can get a burger at the cafe, or imbibe in a cleansing sundown ale at the Woodgate Beach Hotel, and always with World Heritage Fraser

817 m2

<b>Price</b>	\$240,000
<b>Property Type</b>	Residential
<b>Property ID</b>	674
<b>Land Area</b>	817 m2

### AGENT DETAILS

Keryn Angle - 0434 379 533  
Pete Angle - 0438 864 158

### OFFICE DETAILS

One Agency Gympie  
0438 864 158



Island in the near distance.

Although ONE Agency Gympie has provided all information related to this property to the best of our knowledge and resources, we shall not be held accountable or responsible for its accuracy. ONE Agency Gympie urge all buyers to conduct their own independent research and consult their own professionals to conduct due diligence before purchasing.

*The above information provided has been furnished to us by the vendor/s. We have not verified whether or not that information is accurate and do not have any belief in one way or the other in its accuracy. We do not accept any responsibility to any person for its accuracy and do no more than pass it on. All interested parties should make and rely upon their own inquiries in order to determine whether or not this information is in fact accurate.*