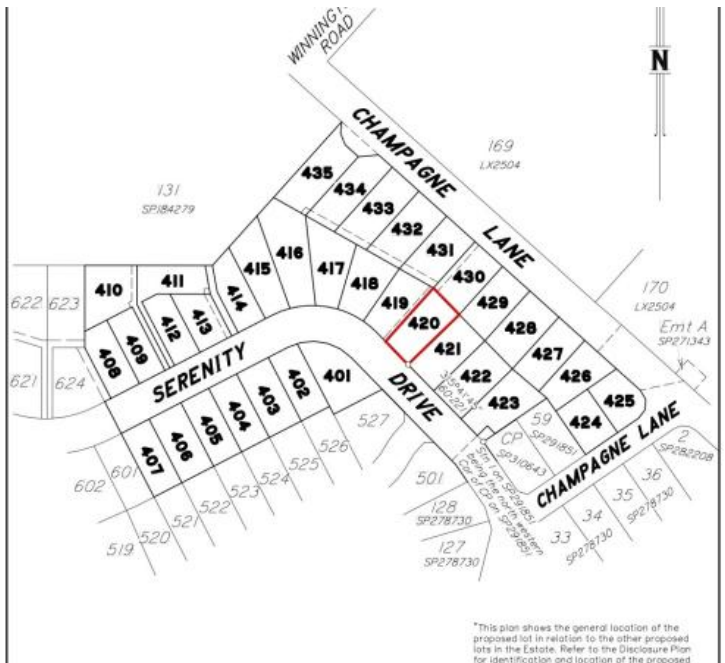


Sold



## Lot, 420 Serenity Drive, Southside

Scale 1:2000 - Lengths are in Metres.

LEGEND		NOTE		DISCLOSURE PLAN	
--- 22.0 ---	Design Contours	PLAN PREPARED BY		DESCRIPTION:	PROPOSED LOT 420
=====	Retaining Wall	SOUTH BURMETT SURVEYS PTY. LTD.			
u	Design Depth of Fill	The Above Data and Plans are for Information Only.			
▨	Areas to be Filled				
□	Design Building Foot				



ONE AGENCY GYMPIE

Crest Estate is a residential development of over 100 lots, located in the established suburb of Southside in Gympie. The development has set a quality benchmark for residential living in Gympie with fully benched lots, extensive use of sandstone retaining walls, high quality entry statement and landscaping. Located just off of Groundwater Road this estate is sure to please everyone.



## LOT 420 SERENITY DRIVE, CREST ESTATE, SOUTHSIDE

Crest Estate is a residential development of over 100 lots, located in the established suburb of Southside in Gympie – via Sunshine Coast, South East Queensland. The development has set a quality benchmark for residential living in Gympie with fully benched lots, extensive use of sandstone retaining walls, high quality entry statement and landscaping. Crest Estate, a new subdivision is setting the benchmark for urban living standards and development in Gympie. The welcome mat awaits homemakers and astute investors wishing to live the dream. Located in the established and quality suburb of Southside, Crest Estate is a boutique residential infill estate – located only minutes to nearby shopping, schools and the CBD. Crest Estate has been designed to capture and maximise the natural landform, views and the prevailing breezes. In order to enhance your quality of lifestyle and investment, an easy to use set of covenant conditions has been thoughtfully considered to ensure quality homes will be built to a high standard.

Although ONE Agency Gympie has provided all information related to this property to the best of our knowledge and resources, we shall not be held accountable or responsible for its accuracy. ONE Agency Gympie urge all buyers to conduct their own independent research and consult their own professionals to conduct due diligence before purchasing.

The above information provided has been furnished to us by the vendor/s. We have not verified whether or not that information is accurate and do not have any belief in one way or the other in its accuracy. We do not accept

776 m<sup>2</sup>

Price SOLD for \$225,000  
 Property Type Residential  
 Property ID 456  
 Land Area 776 m<sup>2</sup>

### AGENT DETAILS

Keryn Angle - 0434 379 533  
 Pete Angle - 0438 864 158

### OFFICE DETAILS

One Agency Gympie  
 0438 864 158

**ONE AGENCY GYMPIE**

*any responsibility to any person for its accuracy and do no more than pass it on. All interested parties should make and rely upon their own inquiries in order to determine whether or not this information is in fact accurate.*