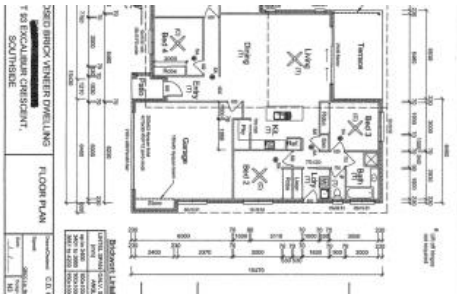


Sold



13 Excalibur Cres, Southside



## BRAND NEW... LET'S GO!

Brand new, internal completed with just the landscaping to complete in the contemporary Sovereign Heights Estate! This beautiful appointed home has 4 bedrooms, 2 bathrooms and so much more. This is the home you have been dreaming of and will be completed (weather pending) within days.

The kitchen contains stone bench tops, and a breakfast bar.

Fans and down lights fitted throughout the home.

Master bedroom has a walk in robe and ensuite.

Main bathroom has a separate bath, shower and toilet.

Fully fenced and turfed block.

A popular estate where you can combine contemporary living amongst a picturesque setting. No need to travel to enjoy established amenities as Southside has a mix of shopping, dining, medical facilities and schools. Only 5 minutes to Gympie's CBD or 45 minutes to Noosa, Rainbow Beach and more this ideally located suburb is the fresh start you have been dreaming of... there is no better place to create your very own home.

Although ONE Agency Gympie has provided all information related to this property to the best of our knowledge and resources, we shall not be held accountable or responsible for its accuracy. ONE Agency Gympie

4 2 2 600 m2

Price SOLD for \$495,000

Property Type Residential

Property ID 341

Land Area 600 m2

### AGENT DETAILS

Pete Angle - 0438 864 158

Keryn Angle - 0434 379 533

### OFFICE DETAILS

One Agency Gympie

0438 864 158

**ONE** AGENCY  
GYMPIE

urge all buyers to conduct their own independent research and consult their own professionals to conduct due diligence before purchasing.

*The above information provided has been furnished to us by the vendor/s. We have not verified whether or not that information is accurate and do not have any belief in one way or the other in its accuracy. We do not accept any responsibility to any person for its accuracy and do no more than pass it on. All interested parties should make and rely upon their own inquiries in order to determine whether or not this information is in fact accurate.*