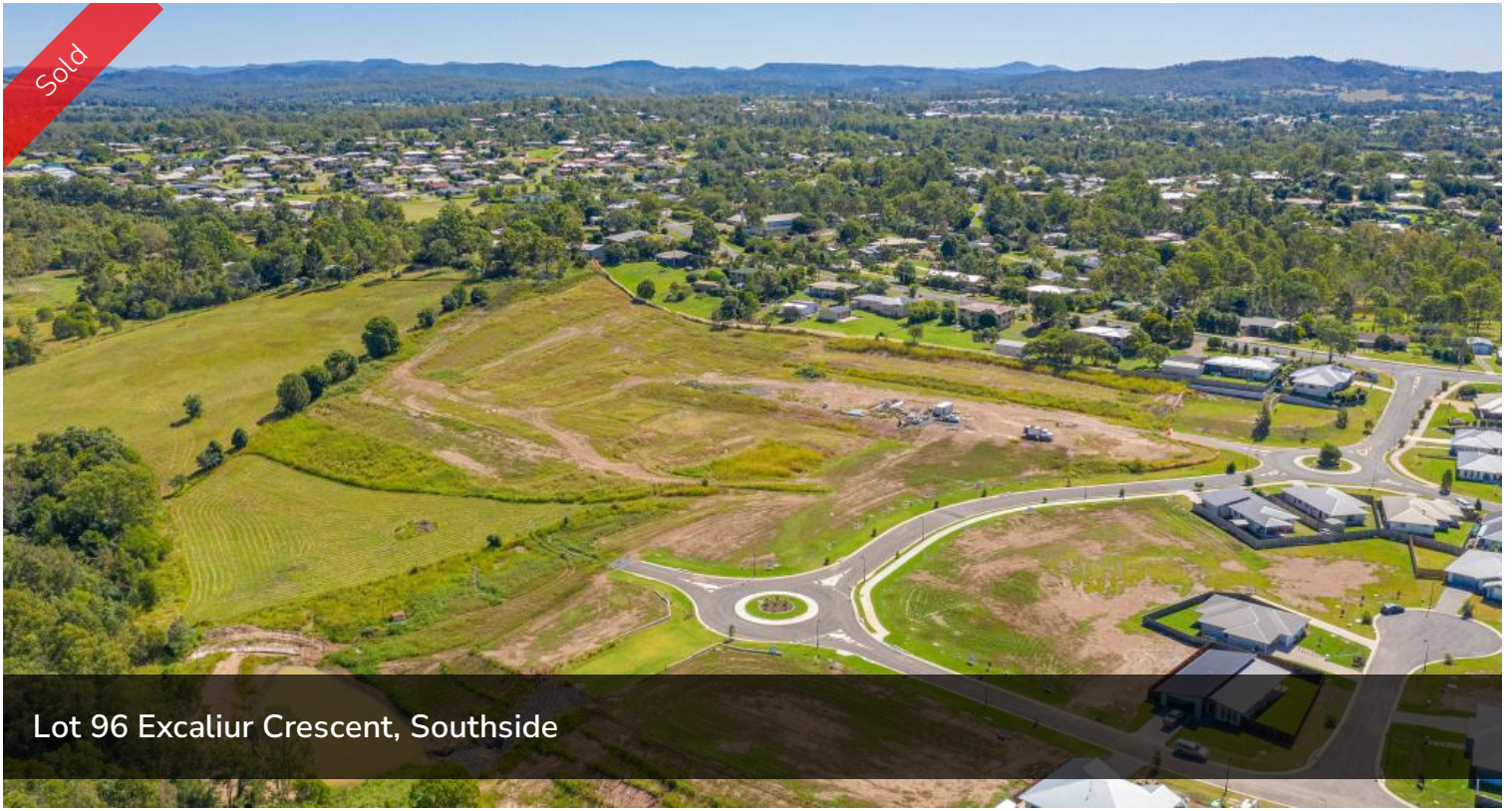


Sold



Lot 96 Excaliur Crescent, Southside



SOVEREIGN HEIGHTS ESTATE, SOUTHSIDE

Stage 5 is here! Register your interest today for this popular estate as it is already selling quickly! An estate where you can combine contemporary living amongst a picturesque setting. Stage 3 and 4 of this sought after estate has SOLD out. Lots vary in size from 600m² to 991m²! With level blocks that are ready to go these sell quickly. No need to travel to enjoy established amenities as Southside has a mix of shopping, dining, medical facilities and schools. Only 5 minutes to Gympie's CBD or 45 minutes to Noosa, Rainbow Beach and more this ideally located suburb is the fresh start you have been dreaming of... there is no better place to create your very own home.

Although ONE Agency Gympie has provided all information related to this property to the best of our knowledge and resources, we shall not be held accountable or responsible for its accuracy. ONE Agency Gympie urge all buyers to conduct their own independent research and consult their own professionals to conduct due diligence before purchasing.

The above information provided has been furnished to us by the vendor/s. We have not verified whether or not that information is accurate and do not have any belief in one way or the other in its accuracy. We do not accept any responsibility to any person for its accuracy and do no more than pass it on. All interested parties should make and rely upon their own inquiries in order to determine whether or not this information is in fact accurate.

600 m²

Price SOLD for \$155,000
Property Type Residential
Property ID 163
Land Area 600 m²

AGENT DETAILS

Pete Angle - 0438 864 158

OFFICE DETAILS

One Agency Gympie
0438 864 158

ONE AGENCY
GYMPIE