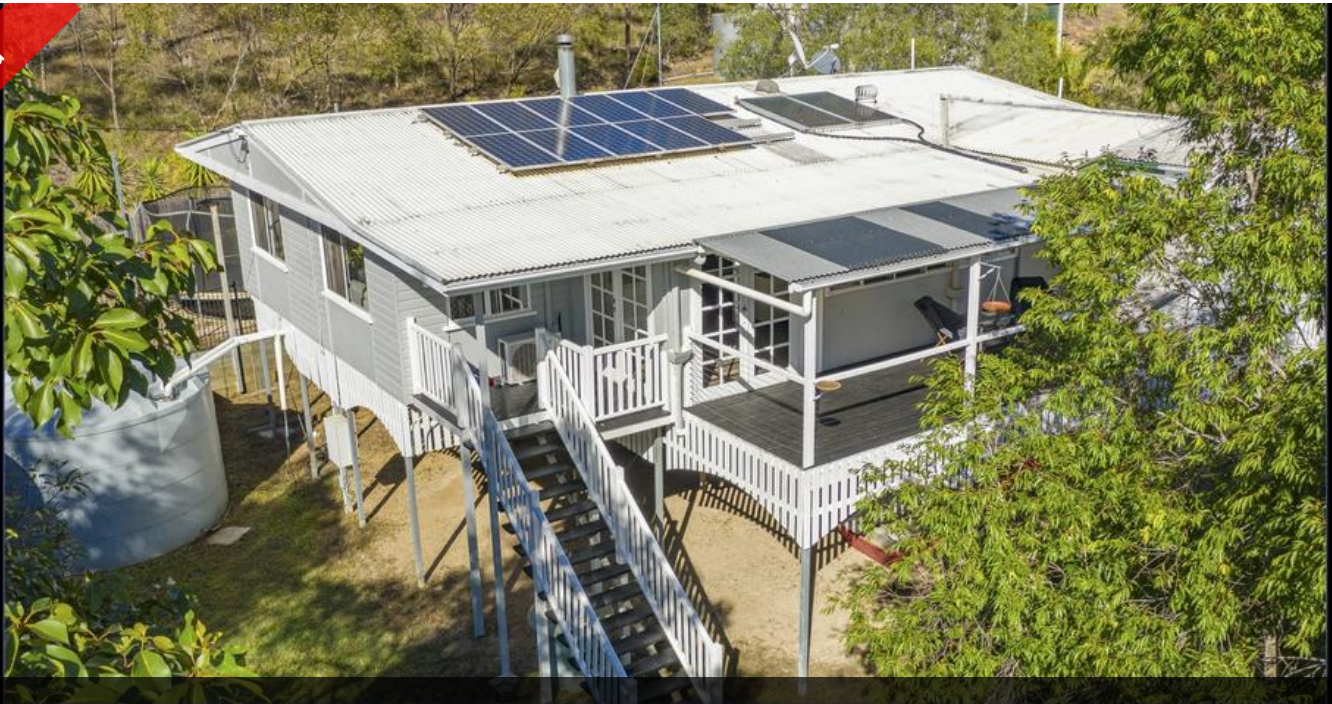


Sold



165 Lynne Dr, Curra

ONE MORE SOLD



LARGE HOUSE ON ACREAGE WITH A HUGE SHED

The minute you arrive at this property it feels like home. This modern Queenslander is well maintained with contemporary colours throughout. Set on 5.23 acres of selectively cleared bush this property has room for entire family. With four bedrooms, two living areas and a games room in a huge shed you will not be disappointed. Located in Curra which is a quiet country locale just 15 minutes north of Gympie. Complete with country club, service station, convenience store and even a chemist. The perfect place to try out your new relaxed lifestyle.

House:

High set weatherboard and colour bond home positioned privately and well back from the road with a long circular driveway to the house and the shed. Polished timber floors, screens and ceiling fans throughout. Separate living area with fireplace and air conditioning. Large dining and second living room combo with ceiling fan and skylight. Country style kitchen with timber bench tops as a feature and tiled flooring. Stainless steel gas oven with 5 burner cooktop, range hood, dishwasher, beams of cupboard space and soft close drawers.

The above information provided has been furnished to us by the vendor/s. We have not verified whether or not that information is accurate and do not have any belief in one way or the other in its accuracy. We do not accept any responsibility to any person for its accuracy and do no more than pass it on. All interested parties should make and rely upon their own inquiries in order to determine whether or not this information is in fact accurate.

🛏 4 🚗 2 🚗 7

Price	SOLD
Property Type	Residential
Property ID	120
Land Area	2.13 ha

AGENT DETAILS

Pete Angle - 0438 864 158
Keryn Angle - 0434 379 533

OFFICE DETAILS

One Agency Gympie
22 Channon Street Gympie QLD
4570 Australia
0438 864 158

ONE AGENCY
GYMPIE